



connect **here.**

Volvo Parkway & Summit Pointe Drive | Chesapeake, VA 23320





retail & restaurant space **now leasing**

Summit Pointe is a \$330 million mixed-use project that includes the Dollar Tree Inc. campus. The development will feature unparalleled residential, office, and retail offerings to include unique and best-of-class restaurants and stores. Summit Pointe is located in Coastal Virginia in the heart of the dominant Greenbrier retail submarket. The site is surrounded by unmatched retail offerings as well as an abundance of Class "A" office space and regional corporate headquarters. Additionally, the development has easy access to Interstate 64 via two interchanges and is 20 minutes from other regional urban centers.



for retail **leasing contact:**



Chris Read | Senior Vice President
757.228.1803 | chris.read@colliers.com



Jeff Parker | Senior Vice President
757.228.8121 | jeff.parker@colliers.com

Colliers



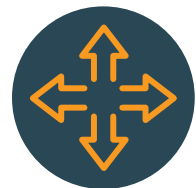
Summit Pointe

Summit Pointe is a \$330 million mixed-use project that includes the Dollar Tree, ranked 111 on the Fortune 500 list. The development will feature unparalleled residential, office, and retail offerings to include unique and best of class restaurants and stores. Summit Pointe is located in Coastal Virginia in the heart of the dominant Greenbrier retail submarket.



Location

Summit Pointe is located along Volvo Parkway connecting Battlefield Boulevard and Greenbrier Parkway in Chesapeake.



Project Size

69 acres in the Greenbrier Central Business District



Trade Area

Over one million people and 375,000 households in the primary trade area. More than 3,600 businesses and 35,000 employees are located within a three-mile radius.



Parking

Two structured parking decks for 2,000 cars offers free parking along with additional on-street parking.



Access

Summit Pointe has easy access to I-64 connecting it to downtown Norfolk and Virginia Beach Town Center.



Retail

Zoning for 500,000 SF of retail space. Currently leasing street-front retail and restaurant space as well as anchor locations. Opportunities for entertainment and experiential uses.



Office

Anchored by Dollar Tree's campus, Summit Pointe is zoned for 1,000,000 SF of office space. Now Leasing 150,000 SF of Class "A" office space and street-level retail space. Typical office building floor plates \pm 22,000 SF.



Residential

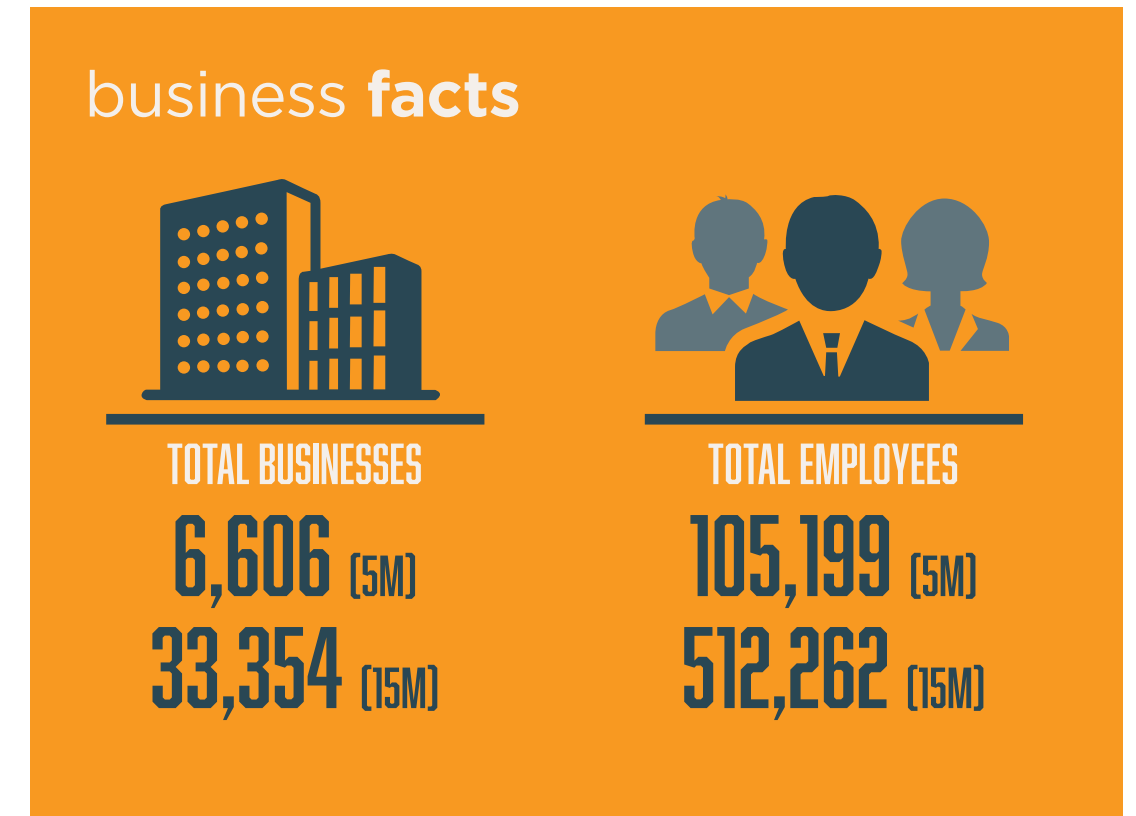
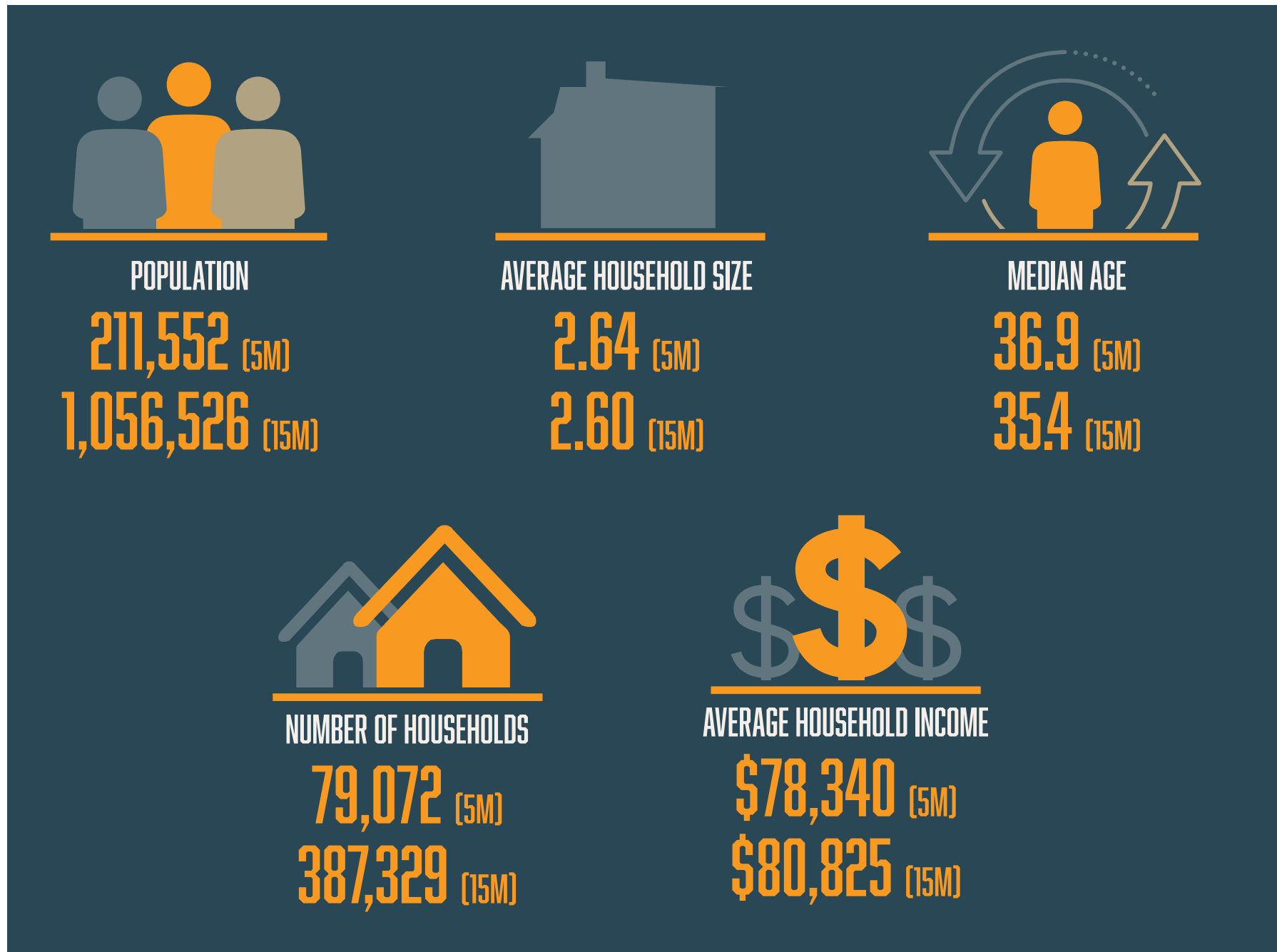
Zoning for over 1,400 residential units. Helix, the first apartment community, has 133 residential units that were fully leased within 90 days. Mosaic, a \$68 million development with 270 residential units is currently under construction.



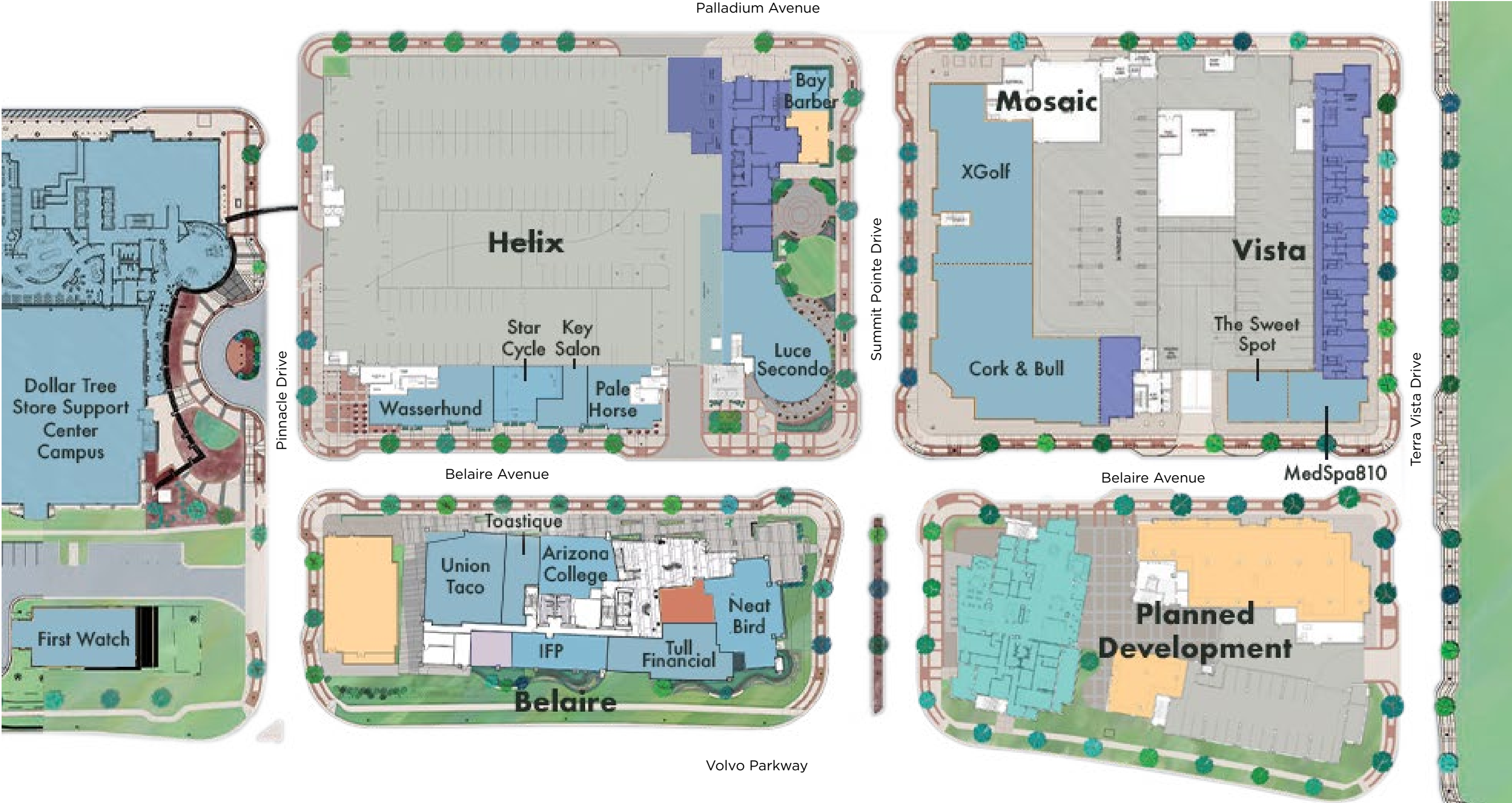
SUMMIT POINTE

- 69 Acres
- 1,400 Residential Units
- 500,000 SF Retail
- 1,000,000 Office





This document has been prepared by Colliers International for advertising and general information only. Colliers International makes no guarantees, representations, or warranties of any kind, expressed or implied, regarding the information including, but not limited to, warranties of content, accuracy and reliability. Any interested party should undertake their own inquiries as to the accuracy of the information. Colliers International excludes unequivocally all inferred or implied terms, conditions and warranties arising out of this document and excludes all liability for loss and damages arising there from. This publication is copyrighted property of Colliers International and/or its licensor(s). ©2021, Colliers International. All rights reserved.

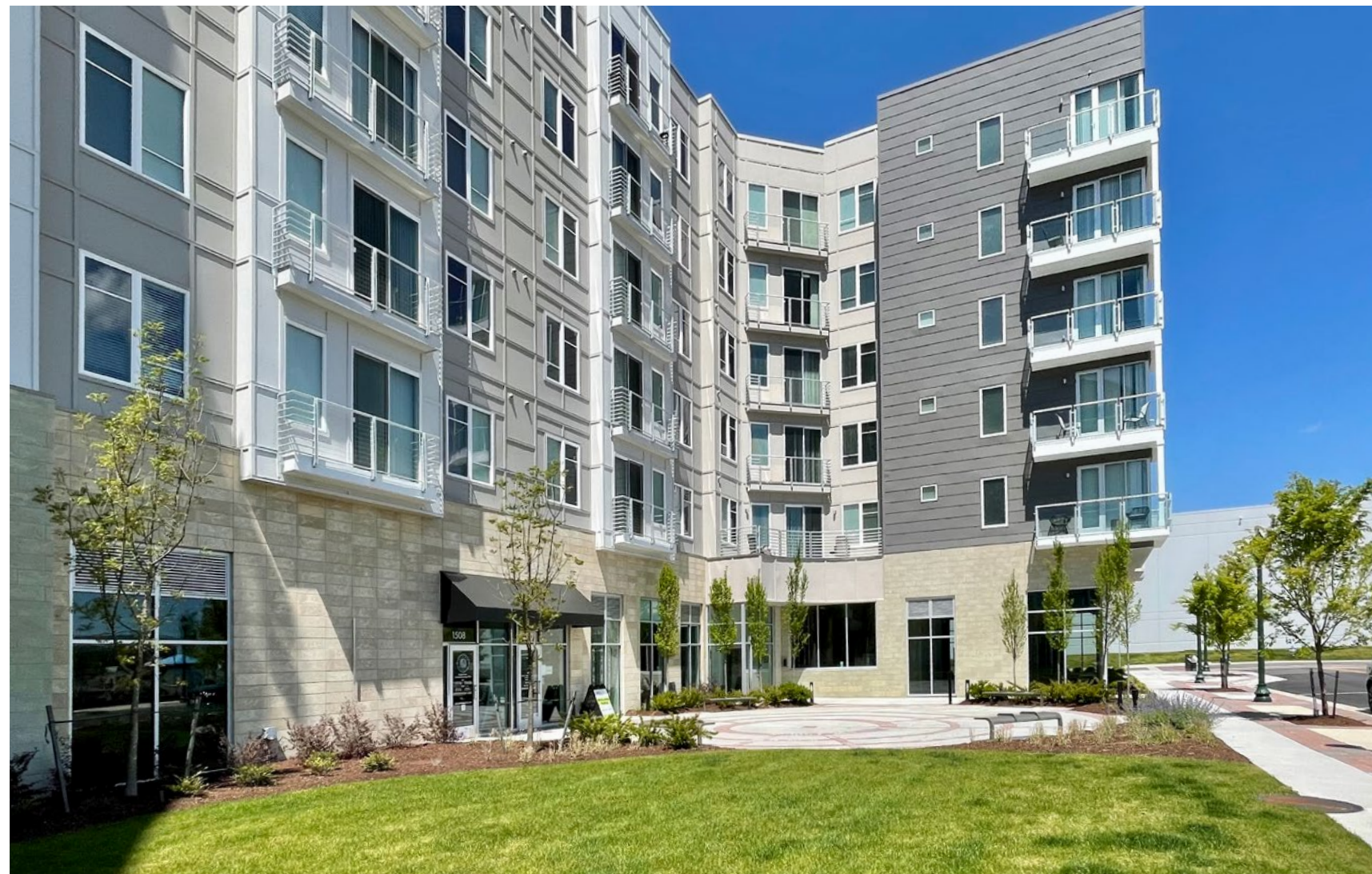


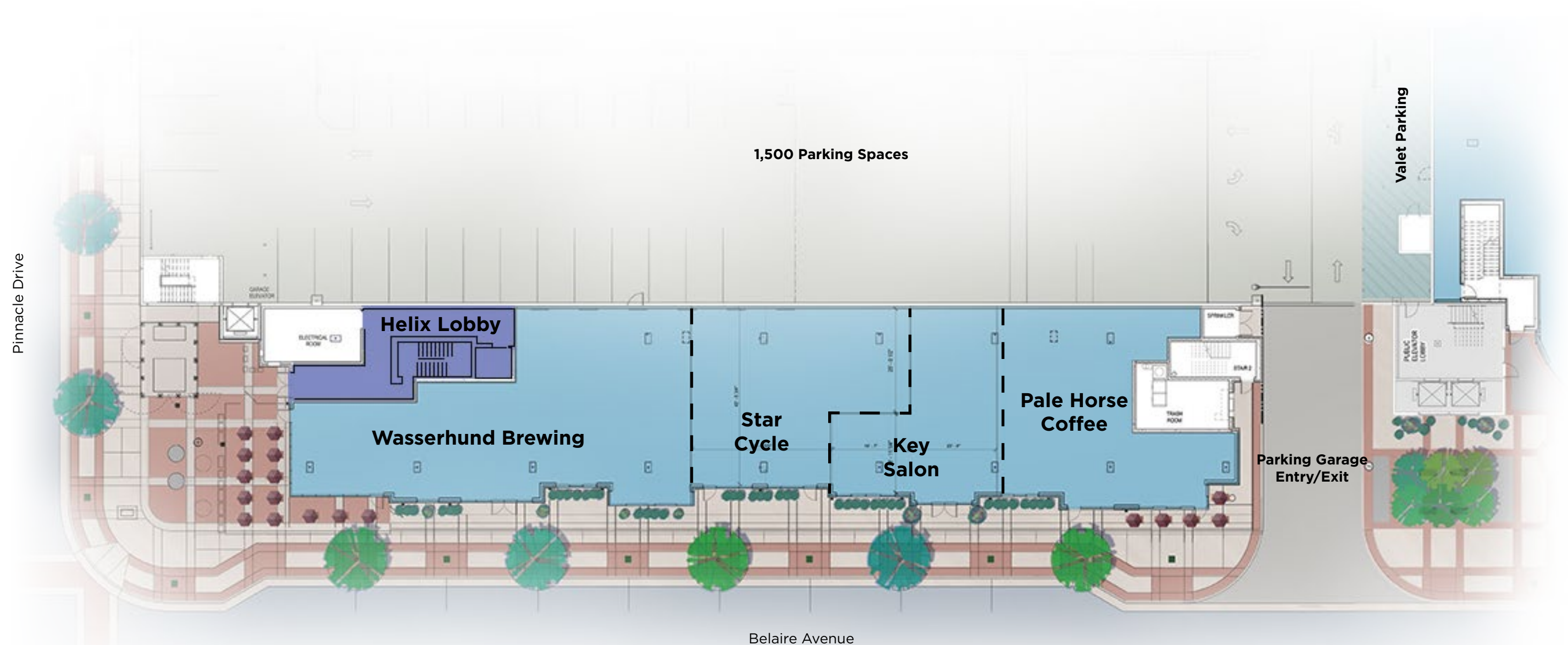
- Available For Lease
- Leased
- Management Office
- Leasable Office Space
- Multi-purpose Meeting Room
- Apartment Amenities





summit pointe | helix





Available For Lease



Leased

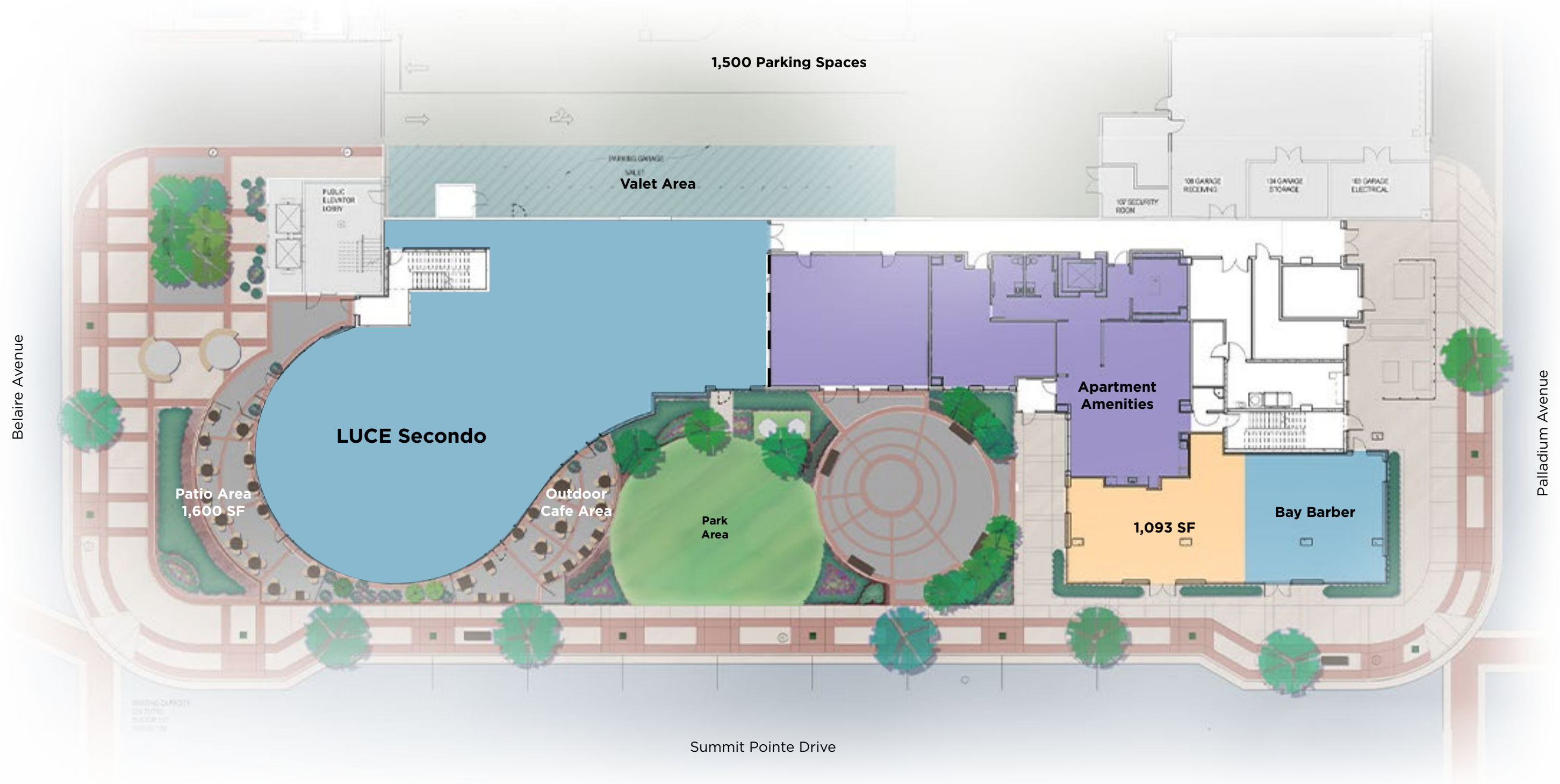


Leasable Office Space



Apartment Amenities





Available For Lease



Leased



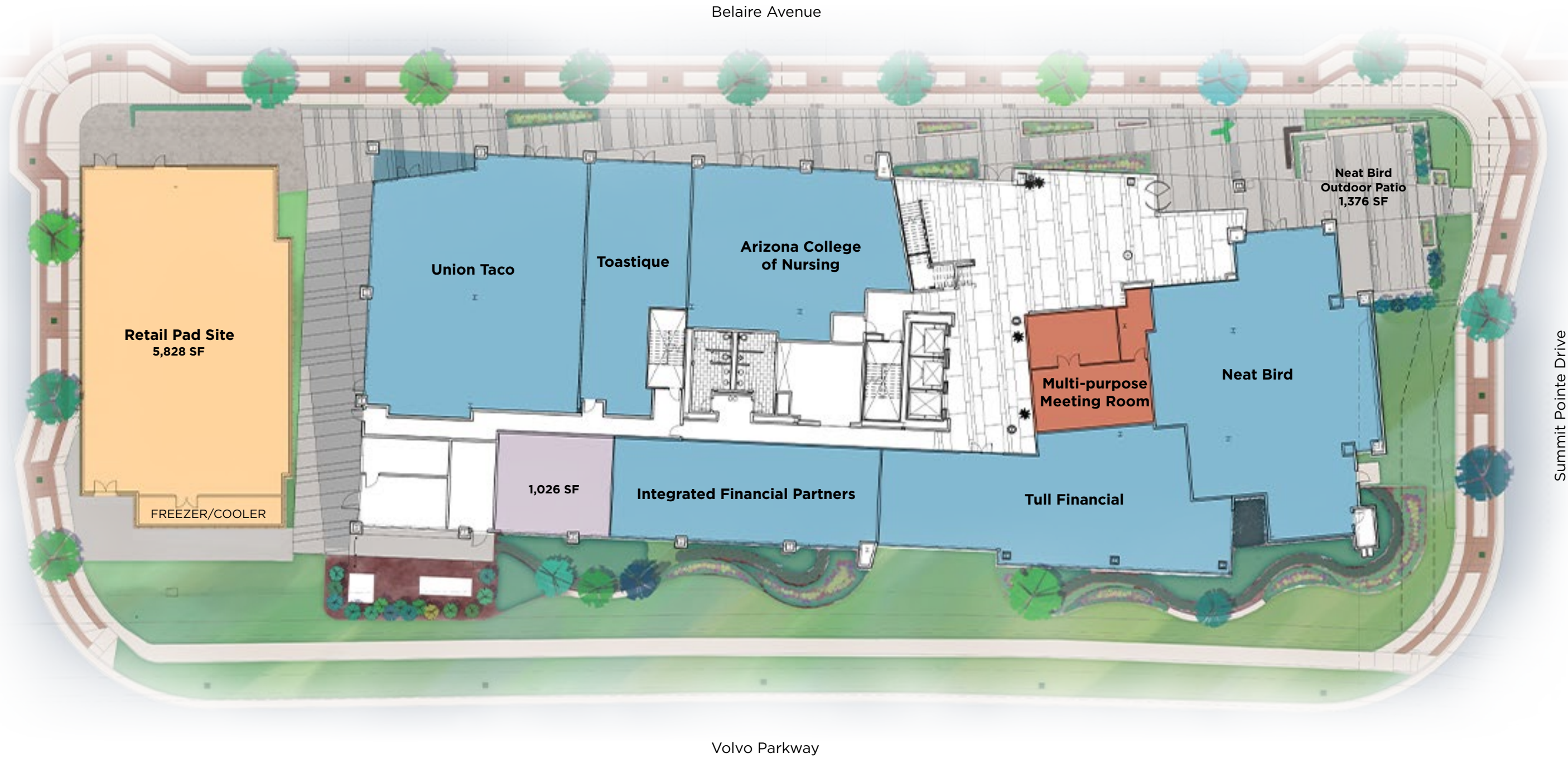
Apartment Amenities





summit pointe | **belaire**





Summit Pointe Drive



Available For Lease



Leased



Management Office

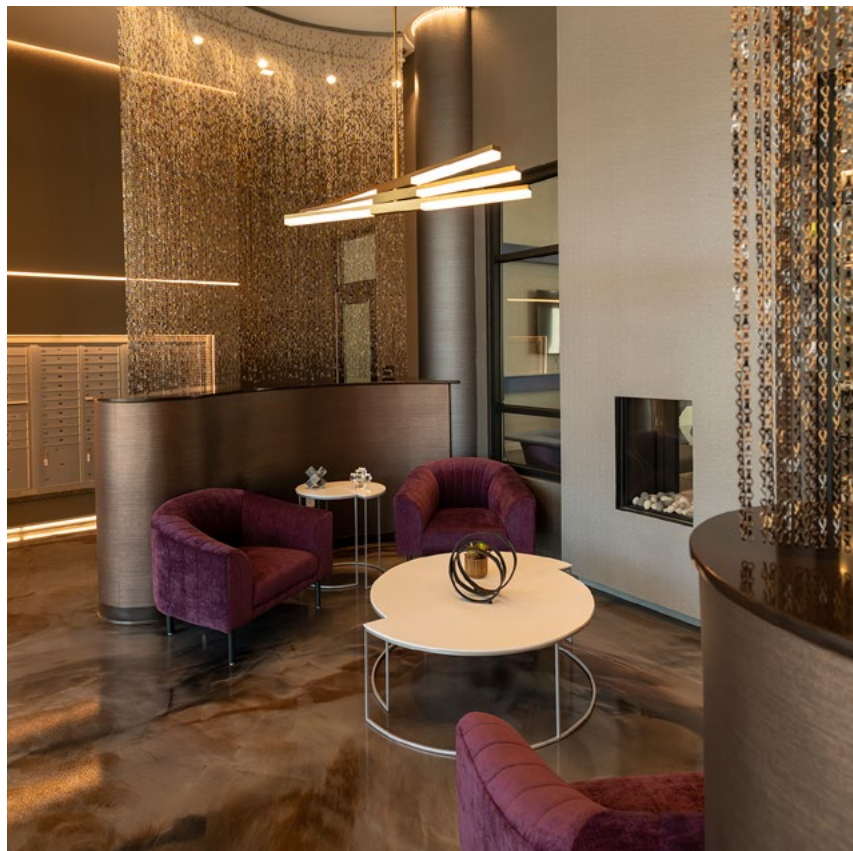


Multi-purpose Meeting Room





summit pointe | mosaic & vista





Available For Lease Leased Apartment Amenities





Available For Lease



Leased



Apartment Amenities





summitpointeva.com

SP-026-101323

Colliers International
150 West Main Street | Suite 1100 | Norfolk, VA 23510 | 757.490.3300

