



# SUMMIT POINTE RETAIL LEASING

## SIGNATURE PROPERTIES

*Be Part of the Premiere  
Coastal Virginia Destination*



### Leasing Team Contacts

#### CHRIS READ

Senior Vice President  
+1 757 228-1803  
[chris.read@colliers.com](mailto:chris.read@colliers.com)

#### JEFF PARKER, CCIM®

Senior Vice President  
+1 757 213-8121  
[jeff.parker@colliers.com](mailto:jeff.parker@colliers.com)

#### COLLIERS INTERNATIONAL

[www.Colliers.com](http://www.Colliers.com)

#### SUMMIT POINTE

[www.SummitPointeVA.com](http://www.SummitPointeVA.com)







## SUMMIT POINTE | DEVELOPMENT INFORMATION

**S**ummit Pointe is a \$300M urban mixed-use community that will feature **unparalleled residential, office, and retail offerings** to include unique and best-of-class restaurants and stores. Summit Pointe is located in Coastal Virginia in **the heart of the dominant Greenbrier retail submarket**. The site is surrounded by unmatched retail offerings as well as an abundance of Class A+ office space and regional corporate headquarters. Additionally, the project includes the iconic high-rise office tower of Dollar Tree, Inc., a Fortune 200 company, and enjoys **tremendous interstate access via two nearby I-64 interchanges**.

### LOCATION:

Volvo Parkway at Summit Pointe Drive  
Chesapeake, VA 23320

### PARKING:

1,500-car structured parking;  
on-street parking

### ACCESS:

Project visibility from I-64. Interstate access via Battlefield Boulevard and Greenbrier Parkway interchanges. Signalized access to Volvo Parkway.

### PROJECT SIZE:

69 acres

### TRADE AREA:

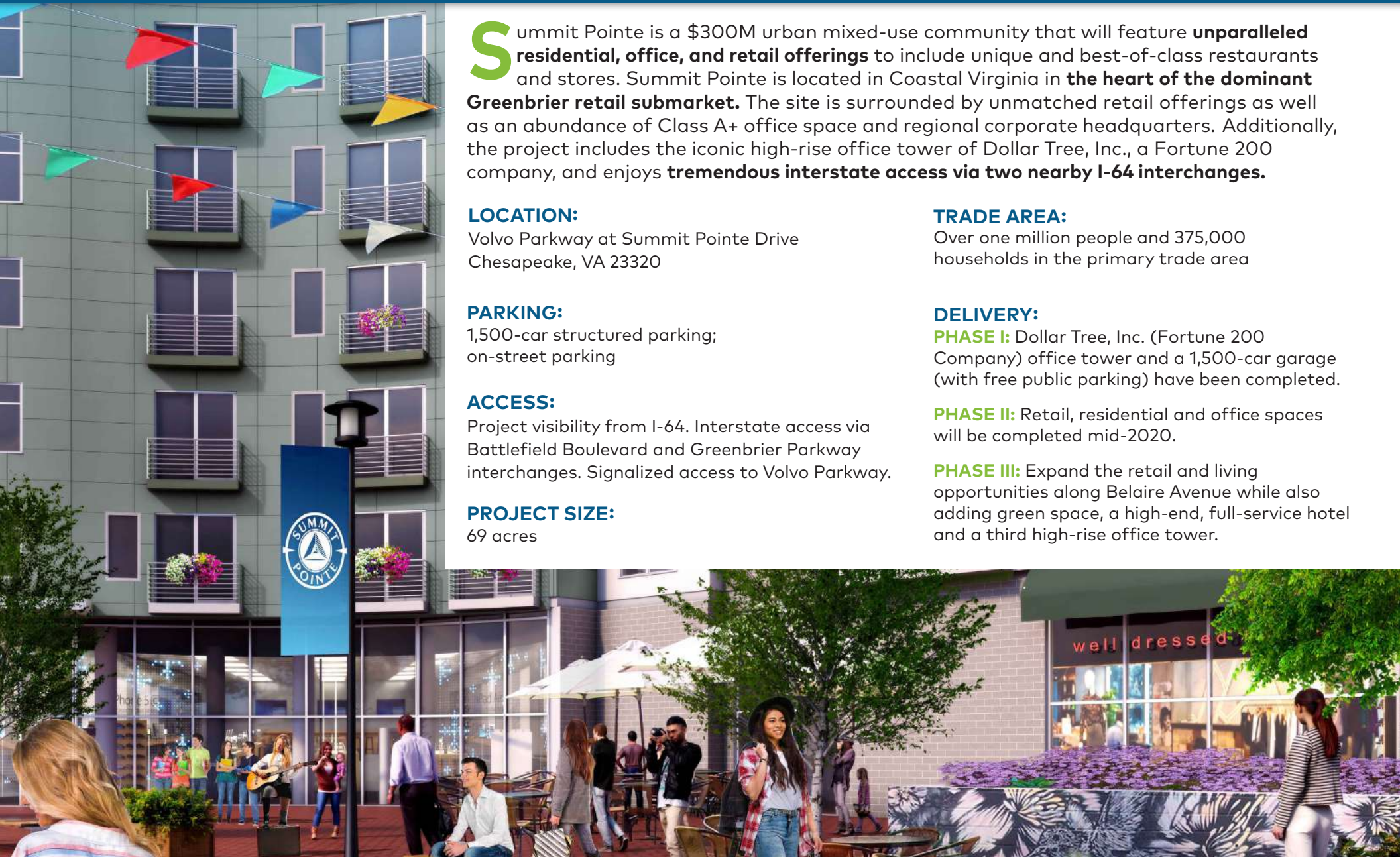
Over one million people and 375,000 households in the primary trade area

### DELIVERY:

**PHASE I:** Dollar Tree, Inc. (Fortune 200 Company) office tower and a 1,500-car garage (with free public parking) have been completed.

**PHASE II:** Retail, residential and office spaces will be completed mid-2020.

**PHASE III:** Expand the retail and living opportunities along Belaire Avenue while also adding green space, a high-end, full-service hotel and a third high-rise office tower.







## SUMMIT POINTE | DEVELOPMENT INFORMATION



Zoning for **500,000 SF OF RETAIL SPACE**. Currently leasing street-front retail and restaurant space as well as anchor locations. Opportunities for entertainment and experiential uses.

Zoning for **1,000,000 SF OF OFFICE SPACE**. Anchored by the 510,000 SF office tower for Dollar Tree, Inc. Now leasing 150,000 SF of Class A+ office space and ground floor retail space.

Zoning for over **1,400 RESIDENTIAL UNITS**. Initial phases will contain approximately 250 multi-family units, with first units being delivered mid-2020.



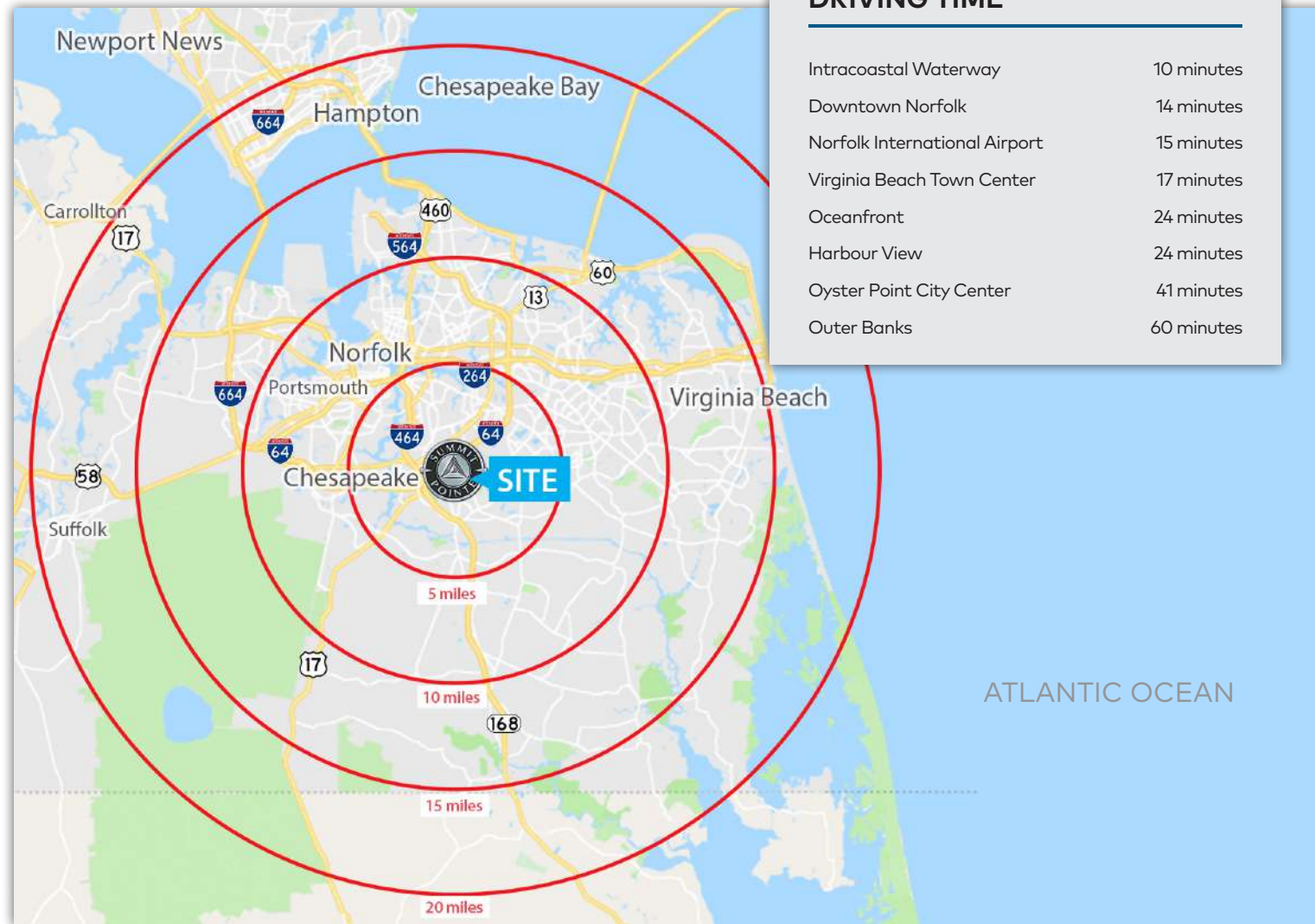




# SUMMIT POINTE

IS A COMPLETE  
**URBAN**  
MIXED-USE  
COMMUNITY  
FEATURING  
**ONE-OF-A-KIND  
BUSINESSES.**

Claim your spot in Coastal Virginia's premier business corridor. Contact Colliers International and join the success story today.







### POPULATION

Current Estimate	1,051,037
5-Year Projection	1,090,694
Daytime Residents	516,671

### HOUSEHOLD

Average Household Size	2.6
Number of Households	387,316
Average Household Income	\$77,416

### AGE

Age 25-34	165,893
Median Age	35.1







# SUMMIT POINTE | 15-MILE RADIUS BUSINESS DEMOGRAPHICS



## BUSINESS

Total Businesses 33,394

## EMPLOYEES

Total Employees 509,337  
White Collar 62.6%  
Blue Collar 20.3%  
Services 17.1%  
Unemployment Rate 5.2%  
Daytime Workers 562,250







# SUMMIT POINTE | 15-MILE RADIUS EDUCATION DEMOGRAPHICS



## GRADUATE

Graduate or Professional Degree	11.7%
---------------------------------	-------

## COLLEGE

Bachelor's Degree	20.3%
Associate's Degree	10%
Some College - No Degree	25.4%

## HIGH SCHOOL

High School Diploma	19.7%
GED or Alternative Credential	4.2%
No High School Diploma	6.2%
Less than 9th Grade	2.4%







# SUMMIT POINTE | SUBMARKET AERIAL







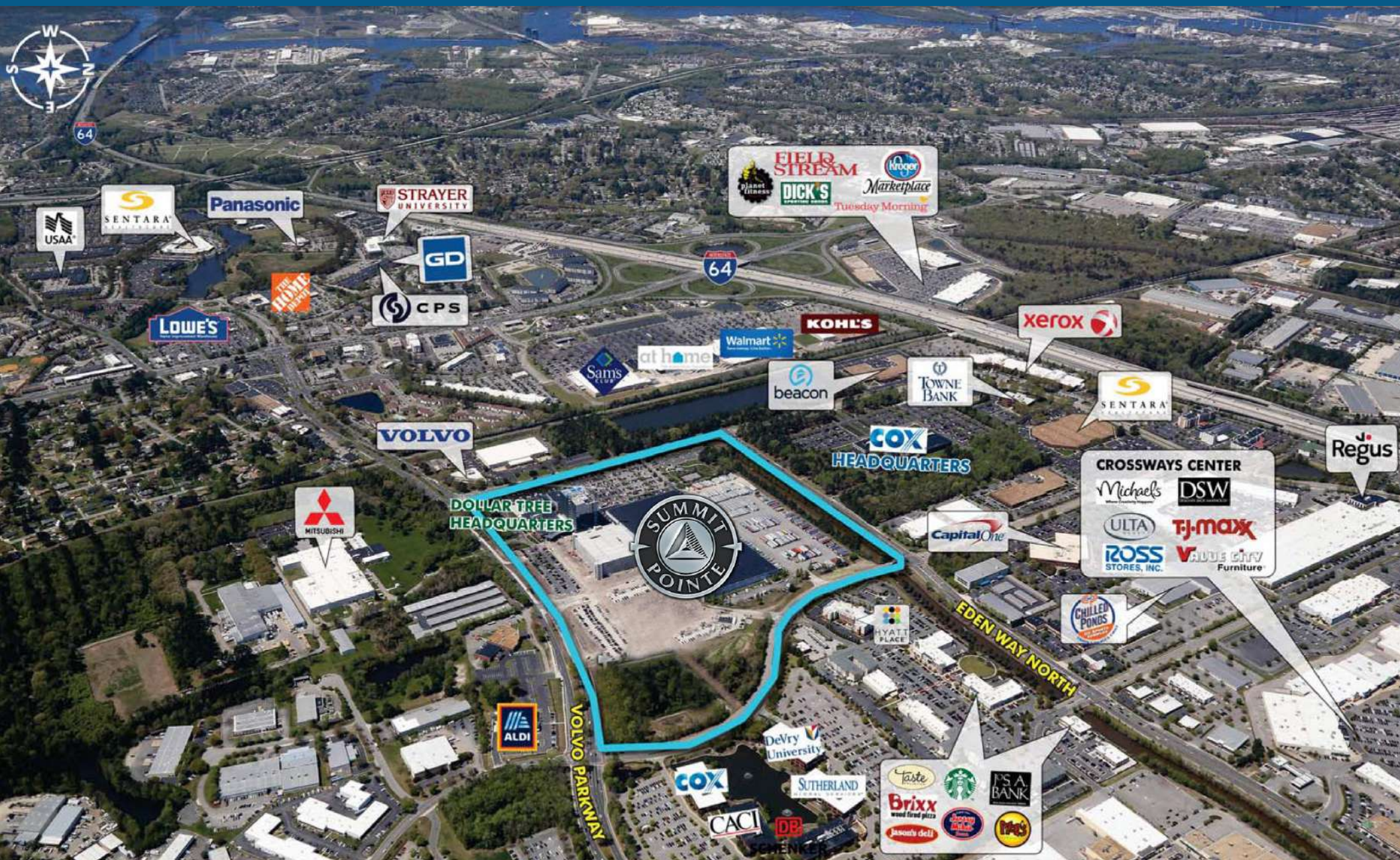
# SUMMIT POINTE | EAST VIEW AERIAL



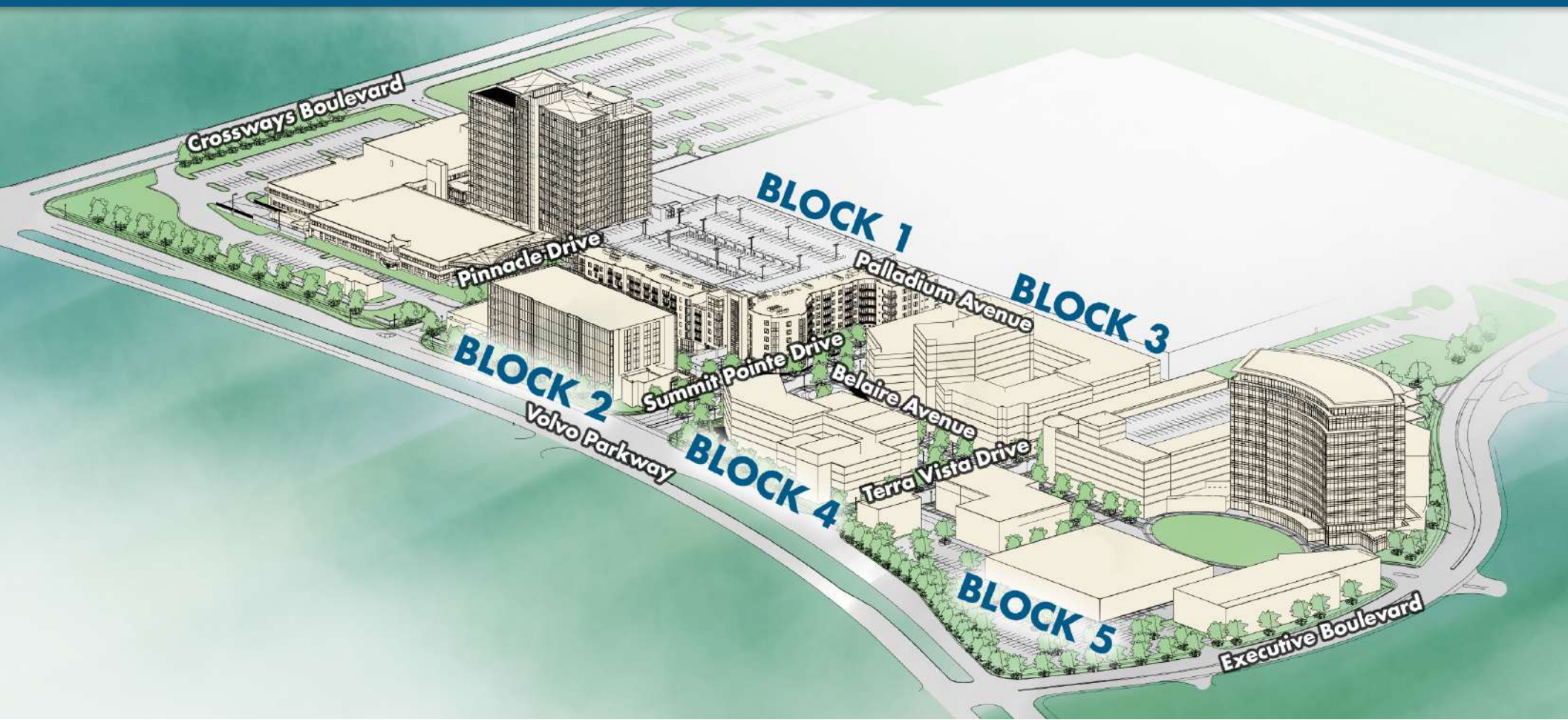




# SUMMIT POINTE | WEST VIEW AERIAL







EXPERIENCE THE DIFFERENCE THAT **SUMMIT POINTE** CAN MAKE FOR  
**YOUR RETAIL BUSINESS SUCCESS**





# SUMMIT POINTE | MASTER LEASING SITE PLAN

## BLOCK 1

Future Tenant	17,114 SF
Amenities	3,390 SF

## BLOCK 2

Commercial	35,362 SF
------------	-----------

## BLOCK 3

Restaurant	5,532 SF
Retail	30,964 SF
Amenities	5,413 SF

## BLOCK 4

Restaurant	10,022 SF
Retail	18,645 SF
Amenities	3,340 SF



**TOTAL  
AREA**

**COMMERCIAL**  
35,362 SF

**RESTAURANT**  
15,554 SF

**RETAIL**  
49,609 SF

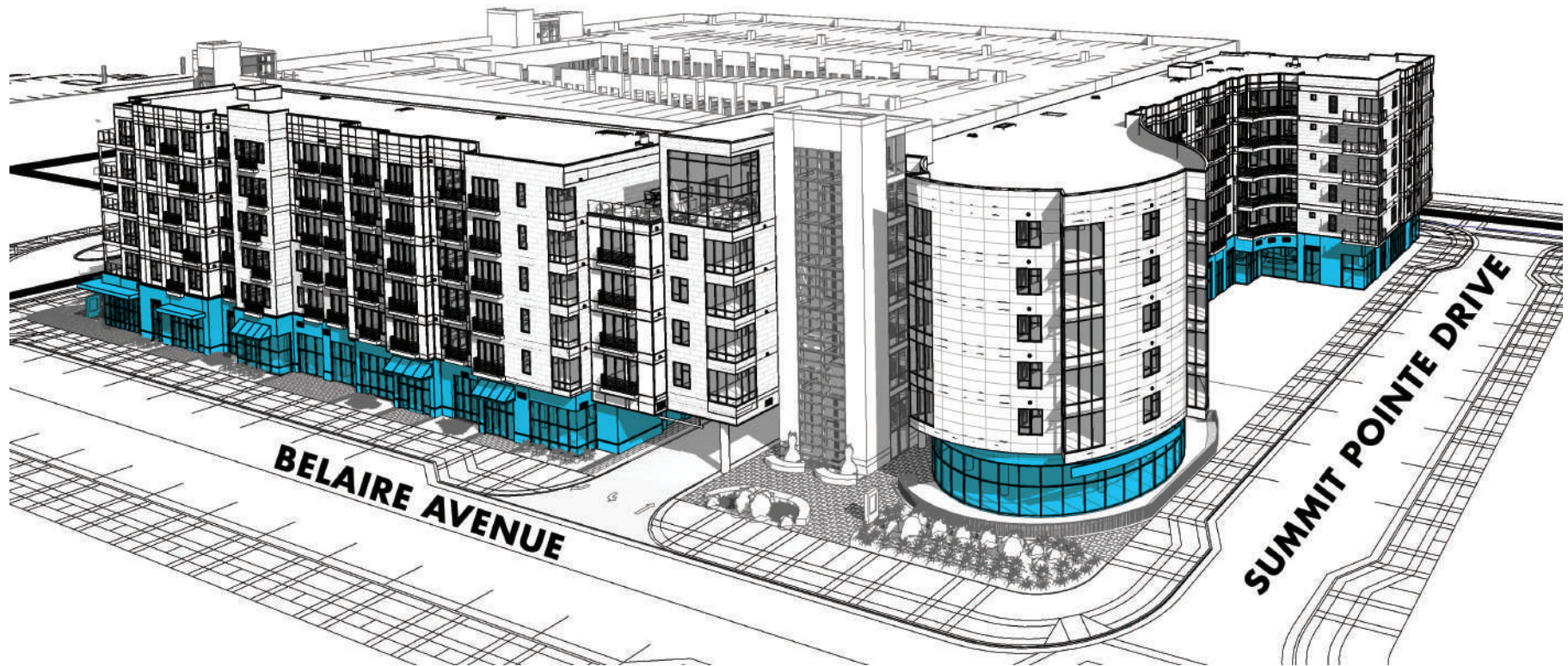
**FUTURE TENANT**  
17,114 SF

**AMENITIES**  
12,143 SF





## SUMMIT POINTE | BLOCK 1 - APARTMENTS/RETAIL/RESTAURANT



 **BLOCK 1 - RETAIL AND RESTAURANT SPACE**





**SUMMIT POINTE** | LEASE NOW



**JOIN THE SUCCESS**

CONTACT **COLLIERS INTERNATIONAL** NOW.

**CHRIS READ**

Senior Vice President  
+1 757 228 1803  
[chris.read@colliers.com](mailto:chris.read@colliers.com)

**JEFF PARKER, CCIM®**

Senior Vice President  
+1 757 213 8121  
[jeff.parker@colliers.com](mailto:jeff.parker@colliers.com)

We invite you to be among the first to join the **DYNAMIC AND GROWING RETAIL LANDSCAPE** at Coastal Virginia's newest urban lifestyle community, Summit Pointe.

The Colliers International team is now leasing dynamic ground-floor retail and restaurant space, with the first spaces scheduled for completion in mid-2020 along Summit Pointe's coveted Belaire Avenue.

Summit Pointe is already home to the iconic high-rise office tower of the **FORTUNE 200 COMPANY, DOLLAR TREE, INC. (NASDAQ: DLTR)**. With the consolidation of their employees to Coastal Virginia in June 2019, the Dollar Tree campus will have the capacity to serve **2,300 EMPLOYEES** in Summit Pointe. A second, 6-story, 150,000 square-foot office building will be available for lease to other companies and is scheduled for completion in mid-2020.

With the growing community attracting companies, residents and visitors, the retail opportunities within Coastal Virginia's newest, bustling urban lifestyle community are endless. Come be a part of this large, untapped retail market in Coastal Virginia.

**NOW IS YOUR CHANCE** to establish yourself among Coastal Virginia's top retailers at Summit Pointe.



**RETAIL LEASING**