



# SUMMIT POINTE OFFICE LEASING

## SIGNATURE PROPERTIES

*Locate your business enterprise in the most dynamic urban office community in Coastal Virginia.*



### Leasing Team Contacts

#### **PERRY FRAZER**

Executive Vice President  
+1 757 228 1833  
[perry.frazer@colliers.com](mailto:perry.frazer@colliers.com)

#### **PAT MUGLER**

Executive Vice President  
+1 757 228 1831  
[patrick.mugler@colliers.com](mailto:patrick.mugler@colliers.com)

#### **COLLIERS INTERNATIONAL**

[www.Colliers.com](http://www.Colliers.com)

#### **SUMMIT POINTE**

[www.SummitPointeVA.com](http://www.SummitPointeVA.com)







## SUMMIT POINTE | DEVELOPMENT INFORMATION

**S**ummit Pointe is a \$300M urban mixed-use community that will feature **unparalleled residential, office, and retail offerings** to include unique and best-of-class restaurants and stores. Summit Pointe is located in Coastal Virginia in **the heart of the dominant Greenbrier retail submarket**. The site is surrounded by unmatched retail offerings as well as an abundance of Class A+ office space and regional corporate headquarters. Additionally, the project includes the iconic high-rise office tower of Dollar Tree, Inc., a Fortune 200 company, and enjoys **tremendous interstate access via two nearby I-64 interchanges**.

### LOCATION:

Volvo Parkway at Summit Pointe Drive  
Chesapeake, VA 23320

### PARKING:

1,500-car structured parking; on-street parking

### ACCESS:

Project visibility from I-64. Interstate access via Battlefield Boulevard and Greenbrier Parkway interchanges. Signalized access to Volvo Parkway.

### PROJECT SIZE:

69 acres

### LEASE TERMS:

7-10 years

### TRADE AREA:

Over one million people and 375,000 households in the primary trade area

### RENTAL RATE:

\$30.00/RSF, full service

### DELIVERY:

**PHASE I:** Dollar Tree, Inc. (Fortune 200 Company) office tower and a 1,500 car garage (with free public parking) have been completed.

**PHASE II:** Retail, residential and office spaces will be completed mid-2020.

**PHASE III:** Expand the retail and living opportunities along Belaire Avenue while also adding green space, a high-end, full-service hotel and a third high-rise office tower.







# SUMMIT POINTE | DEVELOPMENT INFORMATION



Zoning for **500,000 SF OF RETAIL SPACE**. Currently leasing street-front retail and restaurant space as well as anchor locations.

Zoning for **1,000,000 SF OF OFFICE SPACE**. Anchored by the 510,000 SF office tower for Dollar Tree, Inc. Now leasing 150,000 SF of Class A+ office space. Typical building floor plates  $\pm 25,000$  SF.

Zoning for over **1,400 RESIDENTIAL UNITS**. Initial phases will contain approximately 250 multi-family units, with first units being delivered by mid-2020.



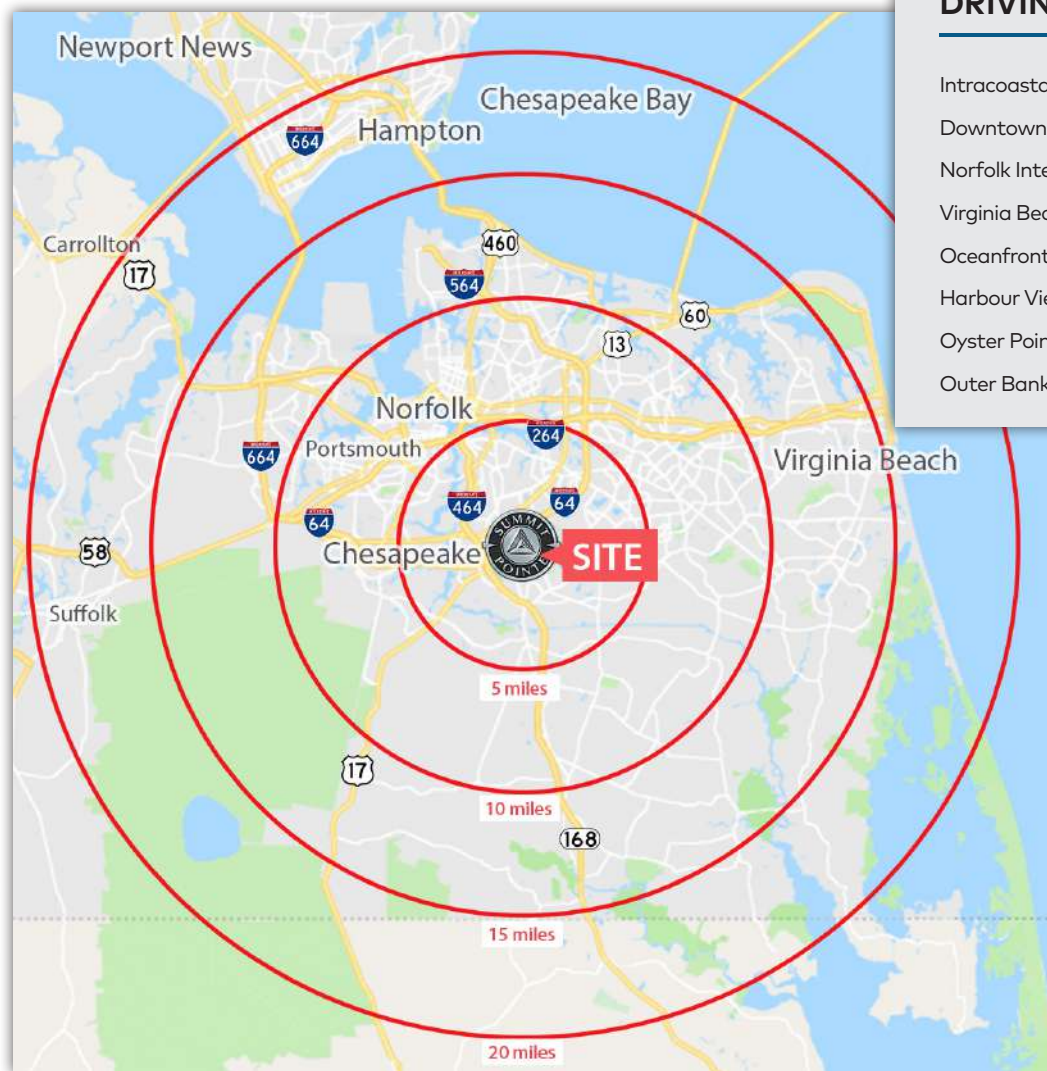




## SUMMIT POINTE | 5, 10, 15, & 20 MILE DEMOGRAPHICS

# SUMMIT POINTE IS A COMPLETE URBAN MIXED-USE COMMUNITY FEATURING ONE-OF-A-KIND BUSINESSES.

Claim your spot in Coastal Virginia's premier business corridor. Contact Colliers International and join the success story today.



### DRIVING TIME

Intracoastal Waterway	10 minutes
Downtown Norfolk	14 minutes
Norfolk International Airport	15 minutes
Virginia Beach Town Center	17 minutes
Oceanfront	24 minutes
Harbour View	24 minutes
Oyster Point City Center	41 minutes
Outer Banks	60 minutes





# SUMMIT POINTE | SUBMARKET AERIAL







# SUMMIT POINTE | PROGRESS AERIALS



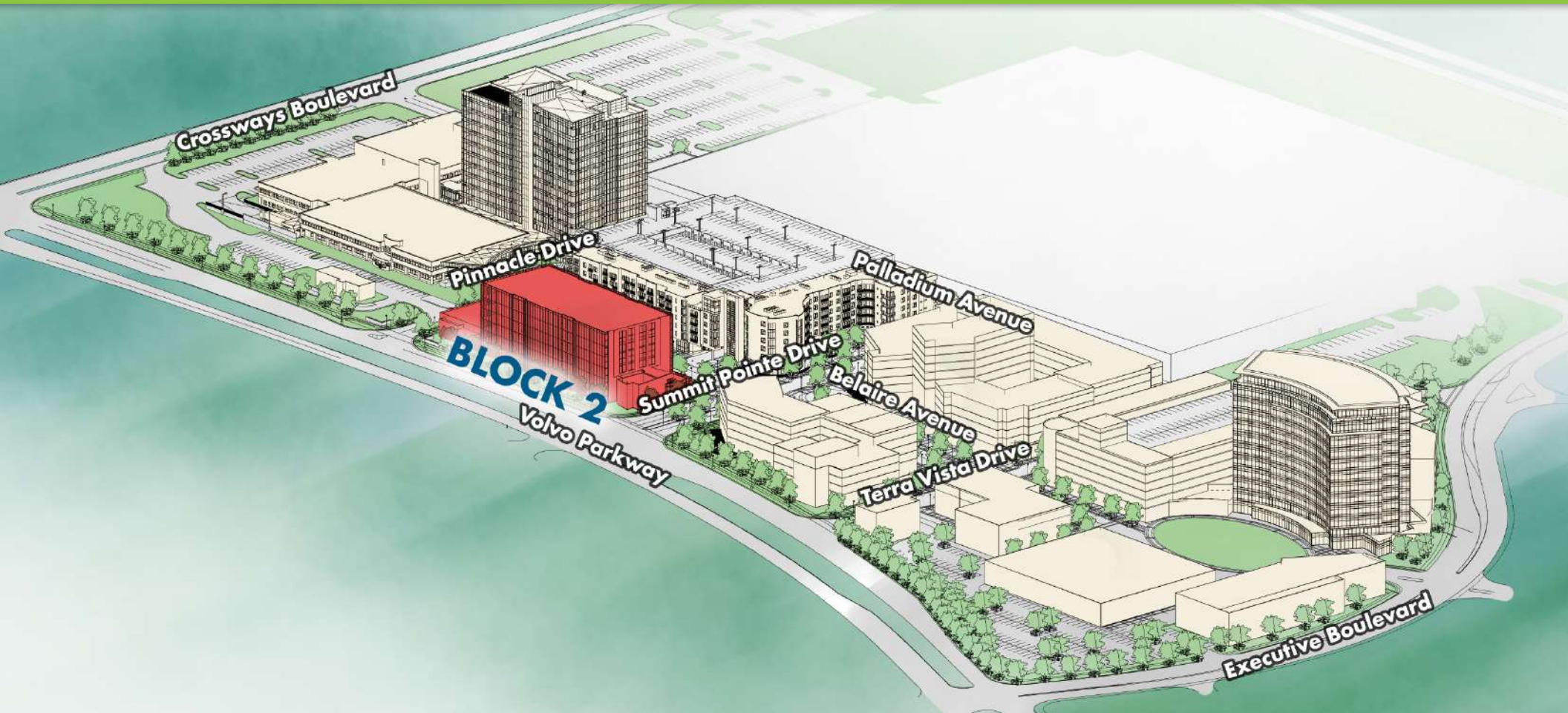




# SUMMIT POINTE | BELAIRE AVENUE





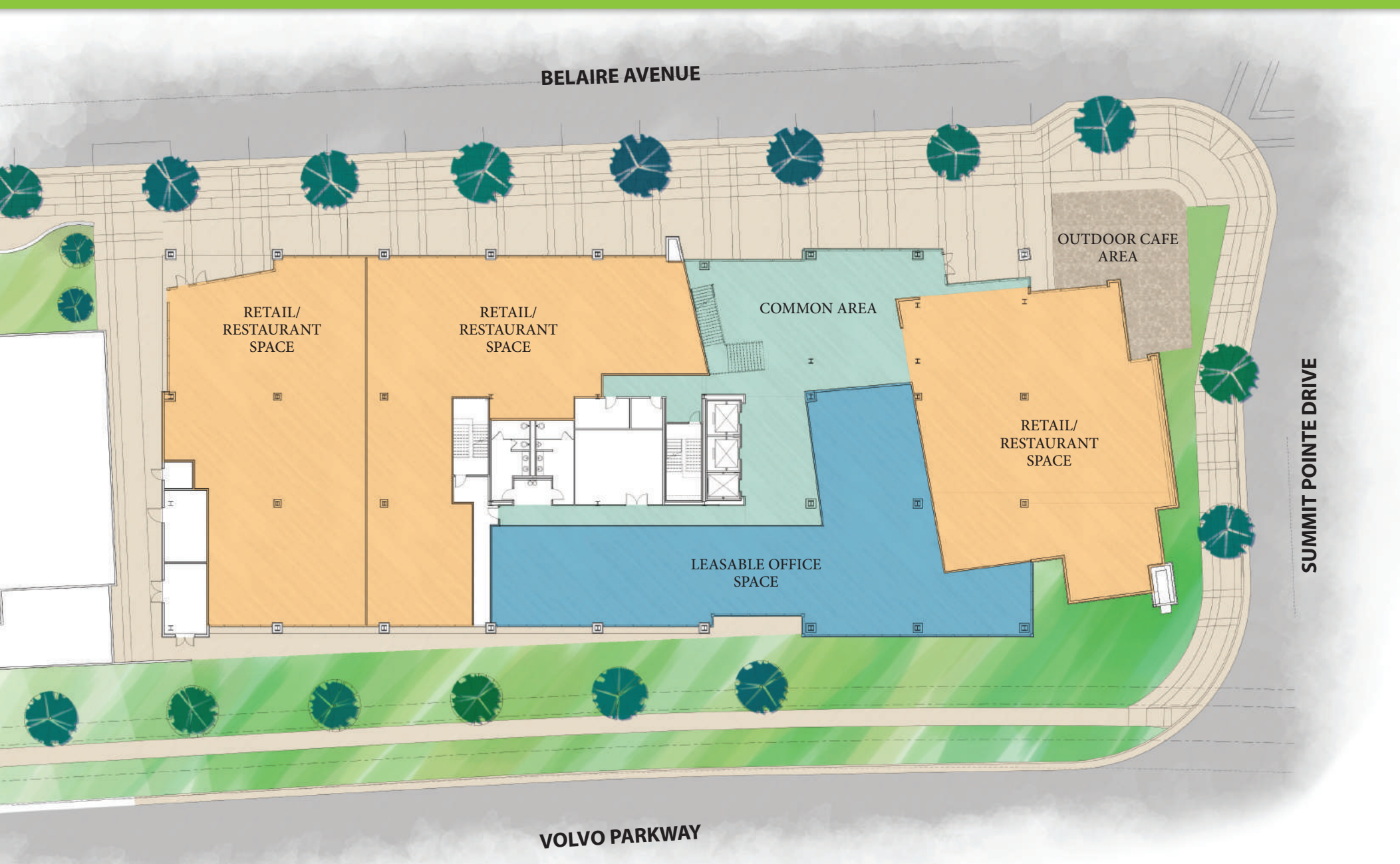


GREAT COMPANIES + GREAT LOCATIONS + GREAT PEOPLE =  
**DYNAMIC COMMUNITIES + SUCCESSFUL BUSINESSES**





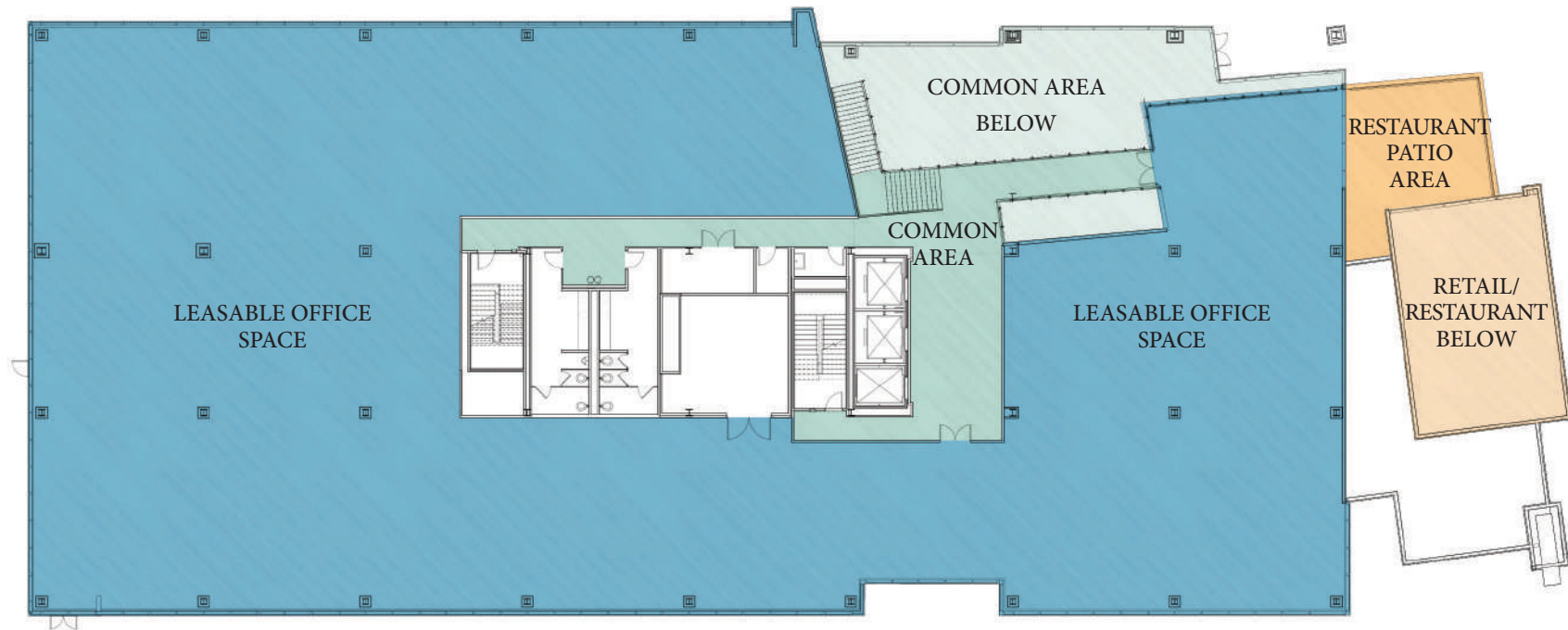
# SUMMIT POINTE | OFFICE FLOOR PLAN: 1ST FLOOR







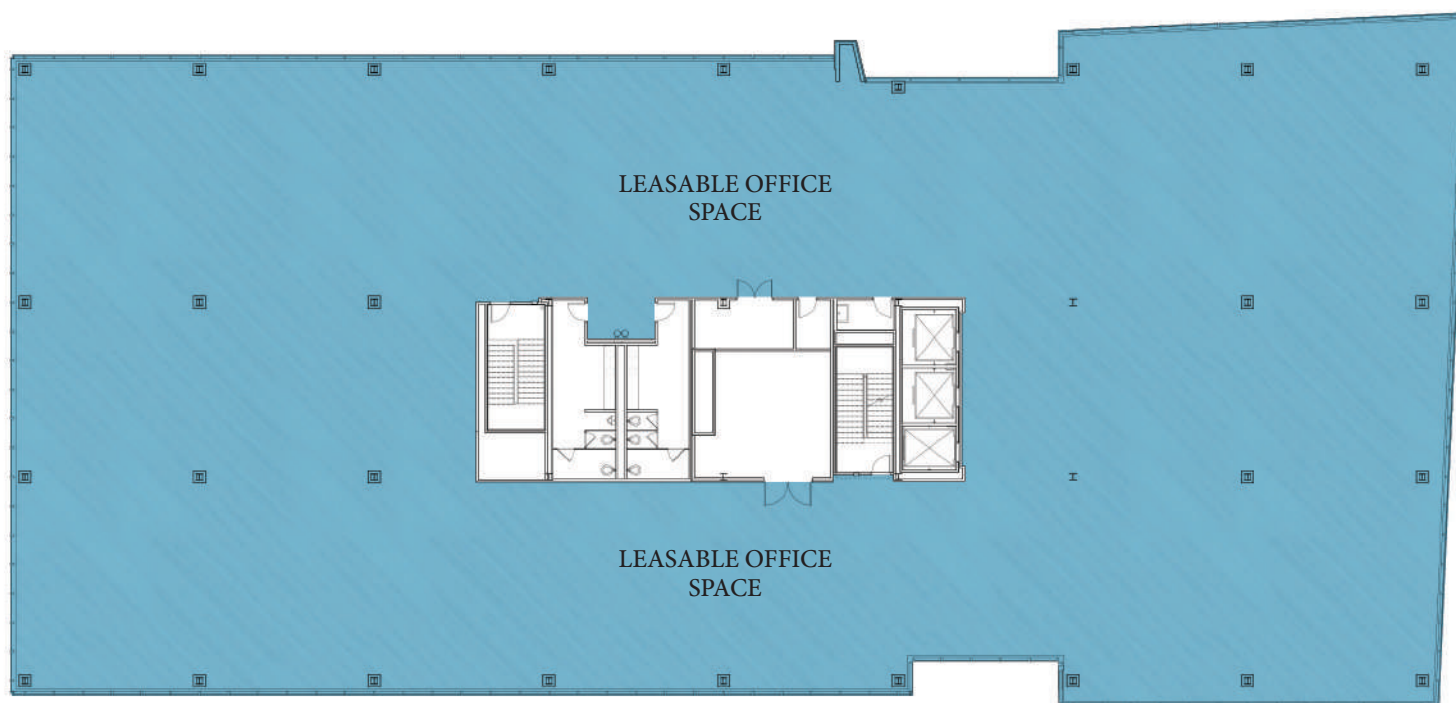
# SUMMIT POINTE | OFFICE FLOOR PLAN: 2ND FLOOR







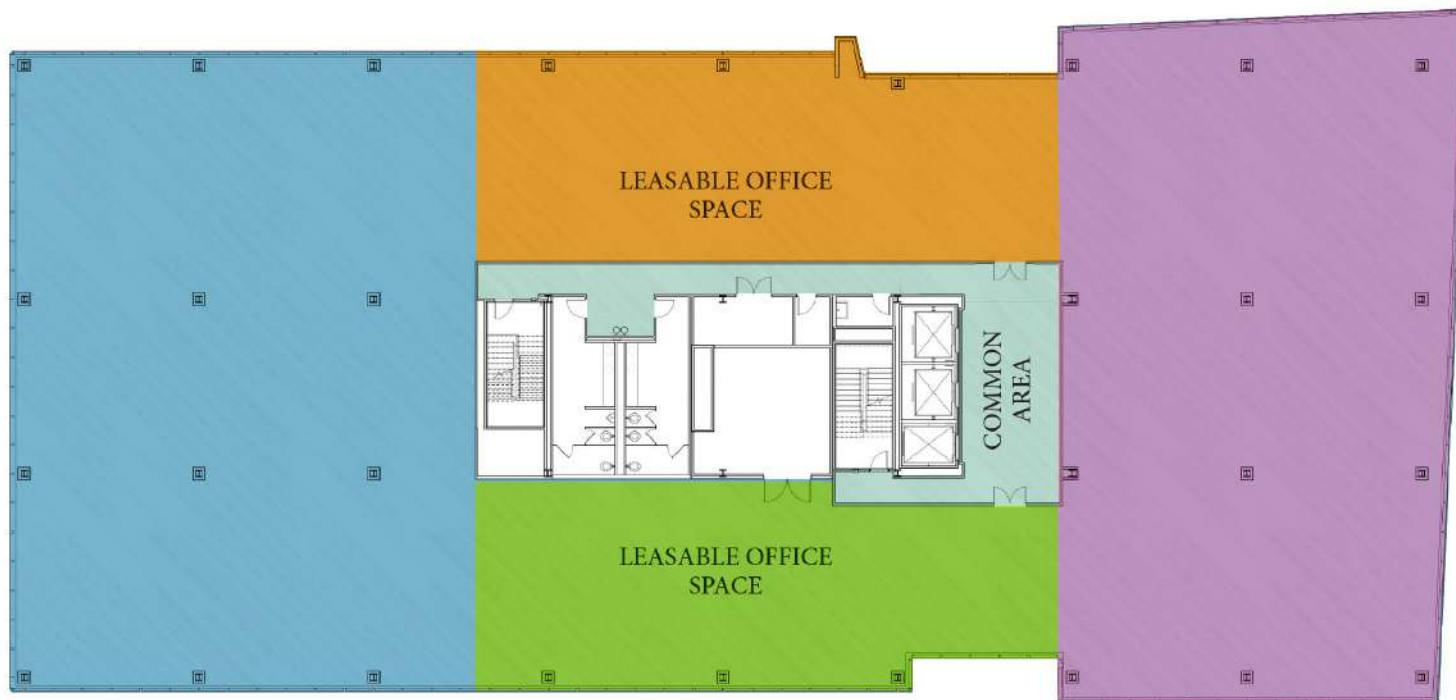
# SUMMIT POINTE | OFFICE FLOOR PLAN: 3RD-6TH FLOOR, SINGLE TENANT







# SUMMIT POINTE | OFFICE FLOOR PLAN: 3RD-6TH FLOOR, MULTI-TENANT







**GROW**  
YOUR BUSINESS IN  
COASTAL VIRGINIA'S  
**PREMIER BUSINESS  
LOCATION.**

Now leasing  $\pm 150,000$  SF of signature Class A+ office space in Coastal Virginia's premier office location. Office space will be completed mid-2020 with typical building floor plates at  $\pm 25,000$  SF.





**SUMMIT POINTE** | LEASE NOW



CONTACT **COLLIERS INTERNATIONAL** NOW.

**PERRY FRAZER**

Executive Vice President

+1 757 228 1833

[perry.frazer@colliers.com](mailto:perry.frazer@colliers.com)

**PAT MUGLER**

Executive Vice President

+1 757 228 1831

[patrick.mugler@colliers.com](mailto:patrick.mugler@colliers.com)

**JOIN THE SUCCESS**

We invite you to claim your position within **COASTAL VIRGINIA'S THRIVING BUSINESS LANDSCAPE** at Summit Pointe.

The Colliers International team is now leasing **±150,000 SQUARE FEET OF CLASS A+ OFFICE SPACE**, scheduled for completion in mid-2020 along Summit Pointe's coveted Belaire Avenue. With typical building floor plates at **±25,000 SQUARE FEET AND AVAILABLE SPACE FOR GROWTH**, the opportunities to develop your business at Summit Pointe are truly endless.

Summit Pointe is already home to the iconic high-rise office tower of the **FORTUNE 200 COMPANY, DOLLAR TREE, INC. (NASDAQ: DLTR)**. By locating in Summit Pointe, you'll be surrounded by a variety of like-minded businesses, unparalleled amenities and events for the enjoyment of your associates. **COME SEE THE DIFFERENCE** that Summit Pointe can make for the success of your business.

Now is your chance to claim a position within the dynamic and growing urban business corridor of Summit Pointe in Coastal Virginia.

